

Appendix V - Maps

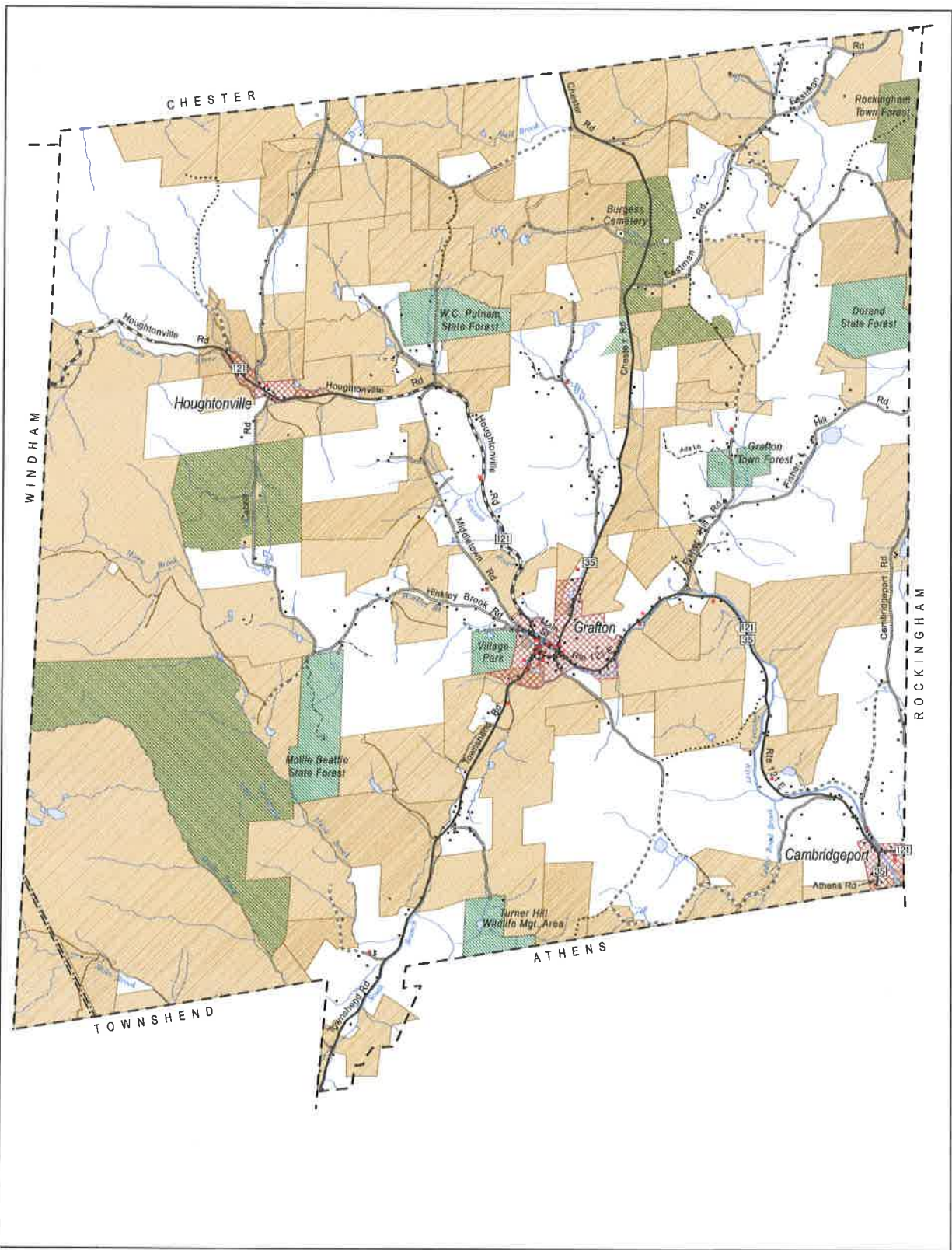
A portfolio of land capability and resource maps, prepared by the Windham Regional Commission under contract with the Town of Grafton, uses GIS data and other information provided by the Grafton Planning Commission. Together with the Town Plan policies, these maps will be used by the Planning Commission as a guide to implement the Town Plan.

Users of these maps (town officials, other authorities, or private individuals) should take into account their general accuracy and allow for the refinement of data and interpretation, based on more detailed studies of particular sites in question.

Maps included in this Town Plan are:

- Existing Land Use
- Resource Areas – Water and Wildlife
- Resource Areas – Land
- Community Facilities
- Transportation Systems
- Known Constraints for Energy Generation
- Possible Constraints for Energy Generation (Map 1 of 2)
- Possible Constraints for Energy Generation (Map 2 of 2)
- Solar Resource
- Solar Energy Potential
- Wind Resource
- Wind Energy Potential
- Proposed Land Use

The Vermont Department of Housing and Community Development (DHCD) awarded the Town of Grafton Municipal Planning Grant funds to support the update of this Town Plan.



Existing Land Use

Town of Grafton, Vt.

November 2018



Buildings (from E911):

- Commercial
- Public/Institutional
- Single-family
- Multi-family

- Village
- State forest, town forest, town park
- Parcel enrolled in Use Value Appraisal, 2013
- Conservation easement

paved roads

unpaved roads

Stream

Pond or river

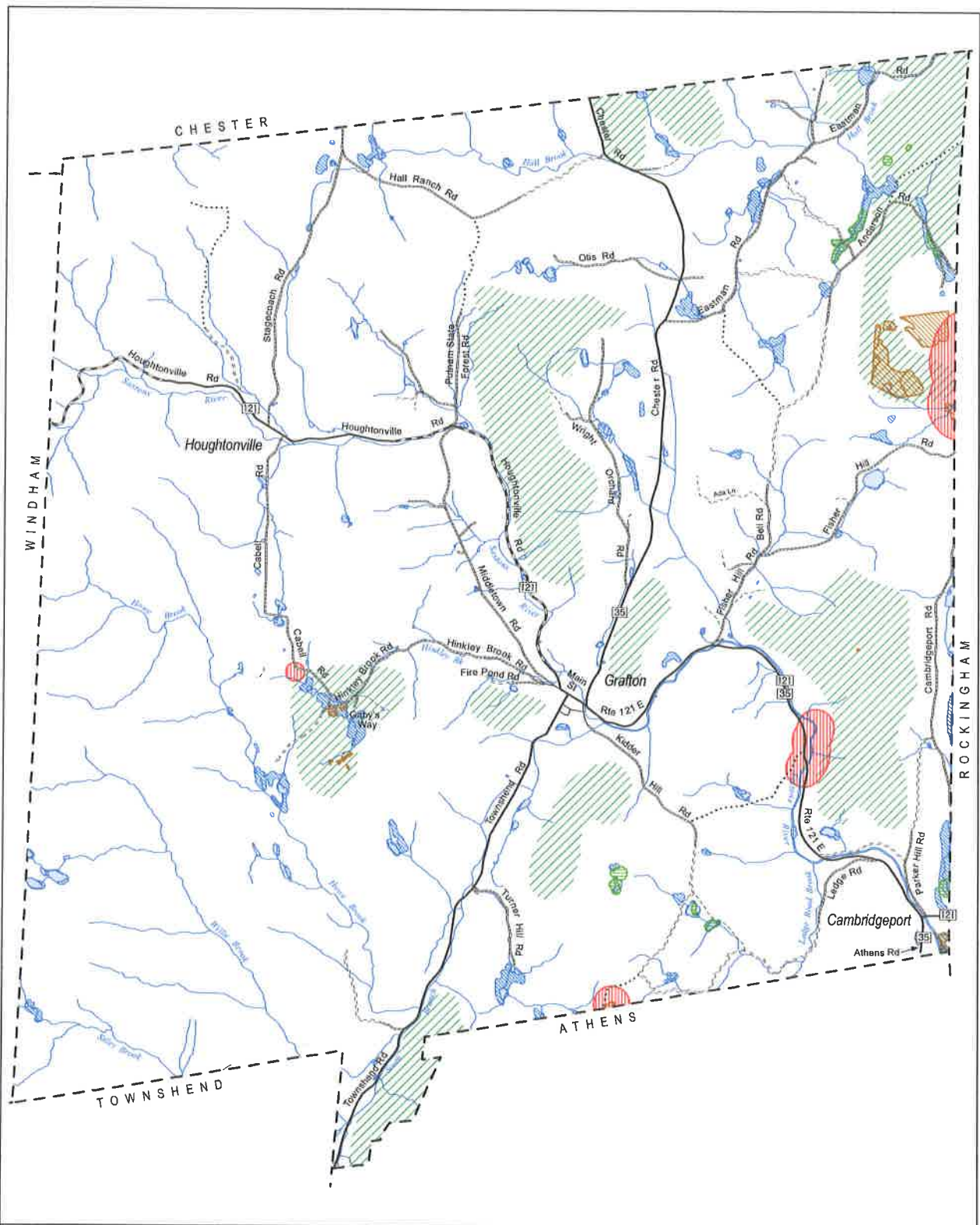
Data sources:

- Village boundaries were determined by the Grafton Planning Commission. Boundary data were developed by WRC GIS staff using existing roads, surface water, and parcel data.

- State and town forest lands were derived from 1:5000 parcel coverage.

- Building locations and type are from the Vermont Enhanced 9-1-1 program and are current to 2018.

- Parcels enrolled in Use Value Appraisal were digitized by Windham Regional Commission using information provided by the Vermont Department of Taxes and the Windham County Forester.



Resource Areas - Water and Wildlife

Town of Grafton, Vt.

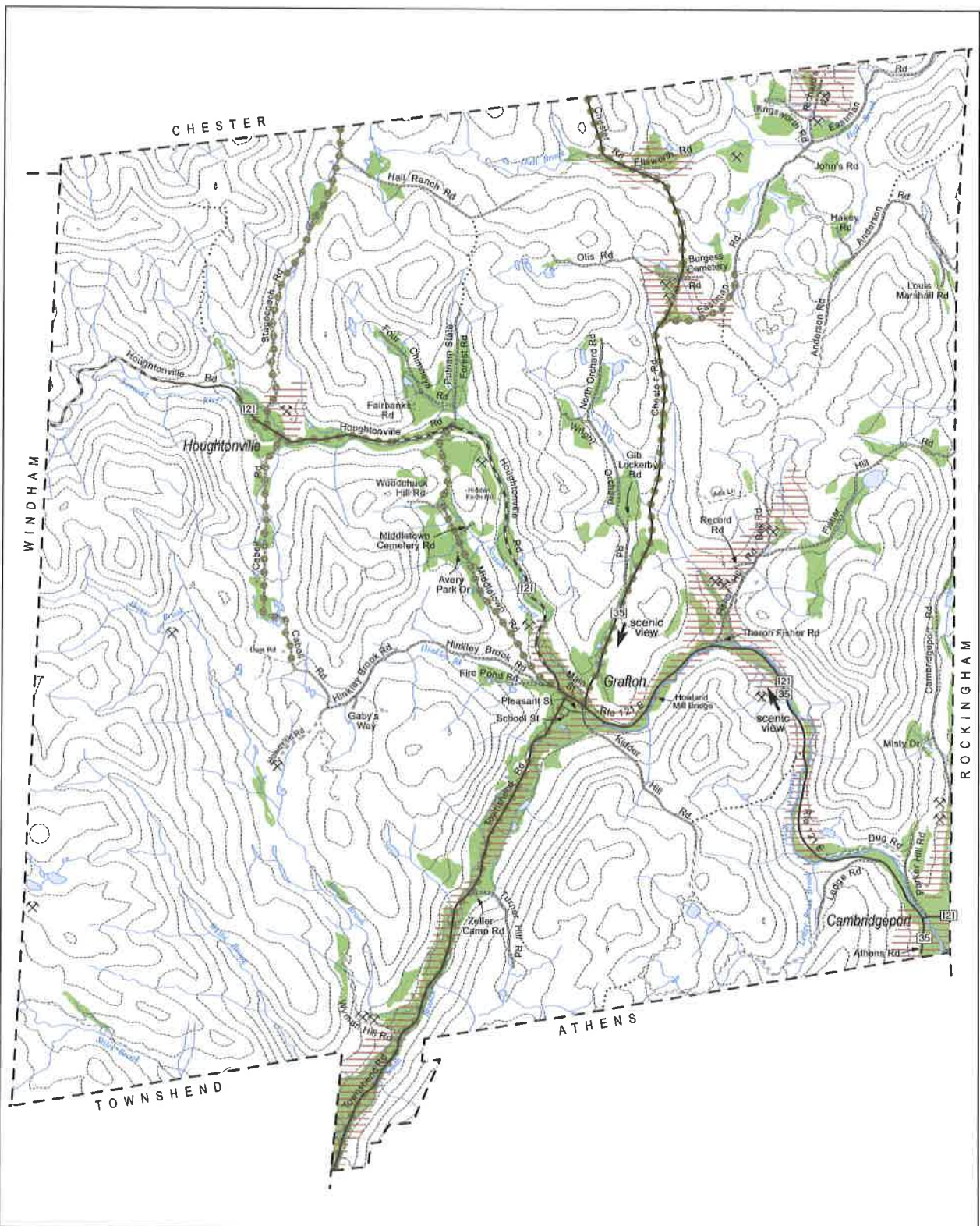
November 2018

WINDHAM REGIONAL COMMISSION
VERMONT GEOGRAPHIC INFORMATION SYSTEM
100 Main St., Room 201 • Grafton, VT 05454
802.351-2447 • www.windhamregional.com

- Endangered, threatened, rare, or uncommon animal
- Endangered, threatened, rare, or uncommon plant
- Significant natural community
- Deer wintering area
- Wetland
- Stream
- Pond or river
- paved roads
- unpaved roads

Data sources:

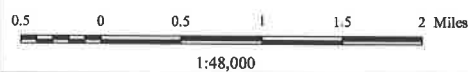
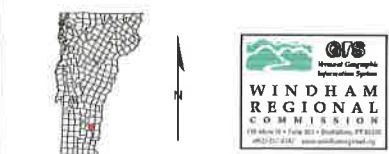
- Natural Heritage data are from VT Dept. of Fish and Wildlife, Nongame and Natural Heritage Program's Natural Heritage Inventory Database. This includes data on Rare, Threatened and Endangered Species and Significant Natural Communities database (VGIS layer R1ENATCCM), and on uncommon species and other features (VGIS layer UNCOMSPOR), 2015.
- Deer wintering areas are taken from the VGIS data layer DEERWN. They were delineated by VT ANR, Department of Fish and Wildlife, and have been updated in a limited extent through 2011.
- Wetlands data are from the Vermont Significant Wetlands Inventory (VGIS data layer VSWI) as of 2010. These include wetlands in the original VSWI data, as well as those from National Wetlands Inventory (NWI) maps, and show approximate locations of wetlands that are generally 3 acres or larger.
- Surface waters are from the Vermont Hydrography Dataset. The dataset was generated at a scale of 1:5000 and was developed using digital orthophotos, topographic maps, color infrared aerial photography and other ancillary data sources.



Resource Areas - Land

Town of Grafton, Vt.

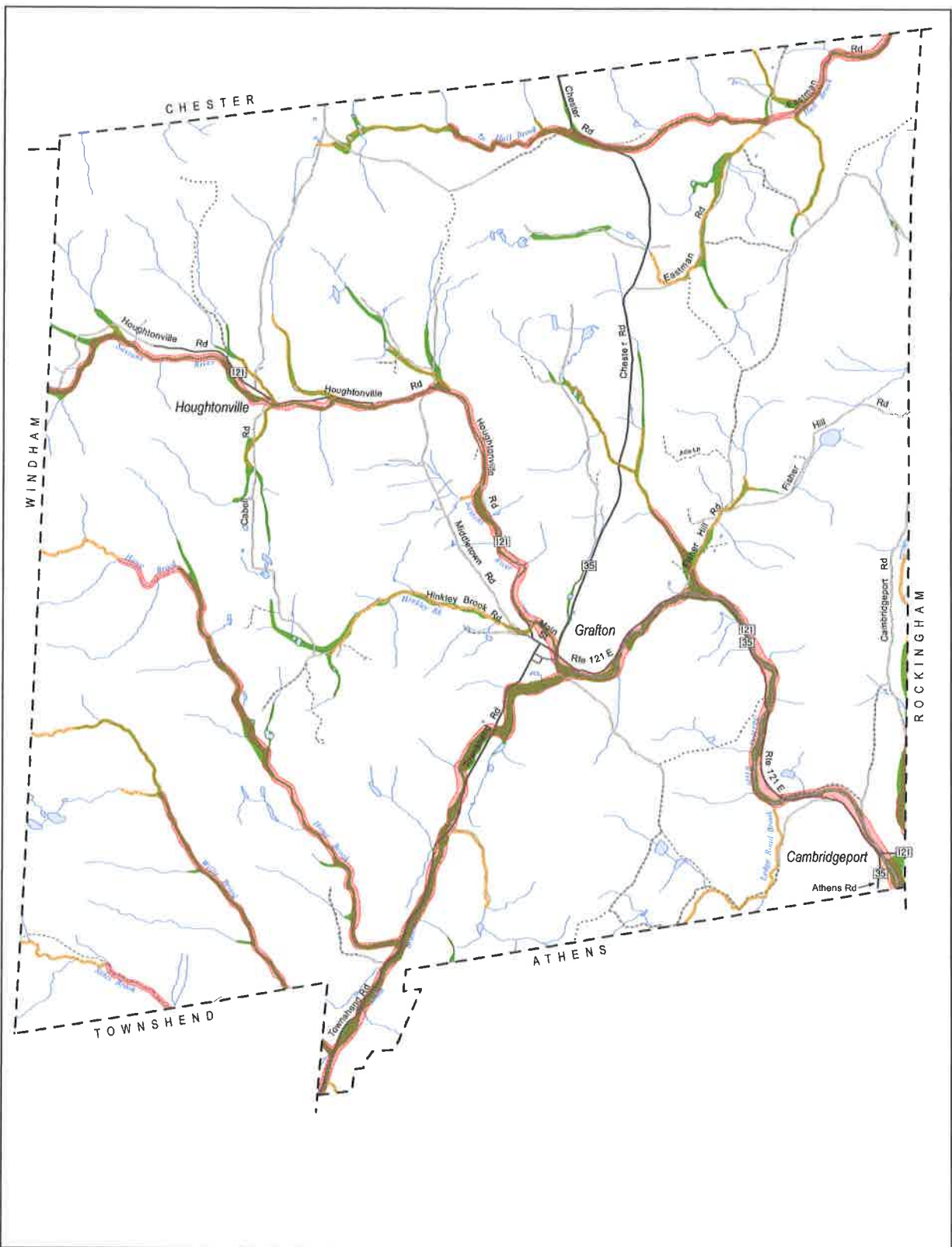
November 2018



- Gravel pit
- Scenic view
- Scenic road
- Sand and gravel resources
- 100-foot contour line
- Important farmland soil
- Stream
- Pond or river
- paved roads
- unpaved roads

Data sources:

- Important farmland soil delineations are derived using soils data available from VCCRI. These soils qualify as Primary Agricultural Soils under Act 250. Soil boundary data were digitized from 1:20,000 orthophotos from the Windham County Soil Survey.
- Scenic roads and views were taken from the 1986 Resource Areas Town Plan map.
- Gravel pit locations were digitized from the 1982 Windham County Soil Survey.
- Sand and gravel resources are from the VGIS data layer AGGRS. This data layer was derived from "Geology for Environmental Planning" series, which in turn was derived from U.S. Geological Survey sources.
- Contour lines were generated from USGS 1:24900 Digital Elevation Models by WRC using ESRI's Spatial Analyst. They are intended to portray the general topography of the area and should not be used to determine actual elevations.



Flood Hazards

Town of Grafton, Vt.

November 2018

- Special Flood Hazard Area
- Mapped River Corridor
- Streams with A River Corridor 50-foot setback

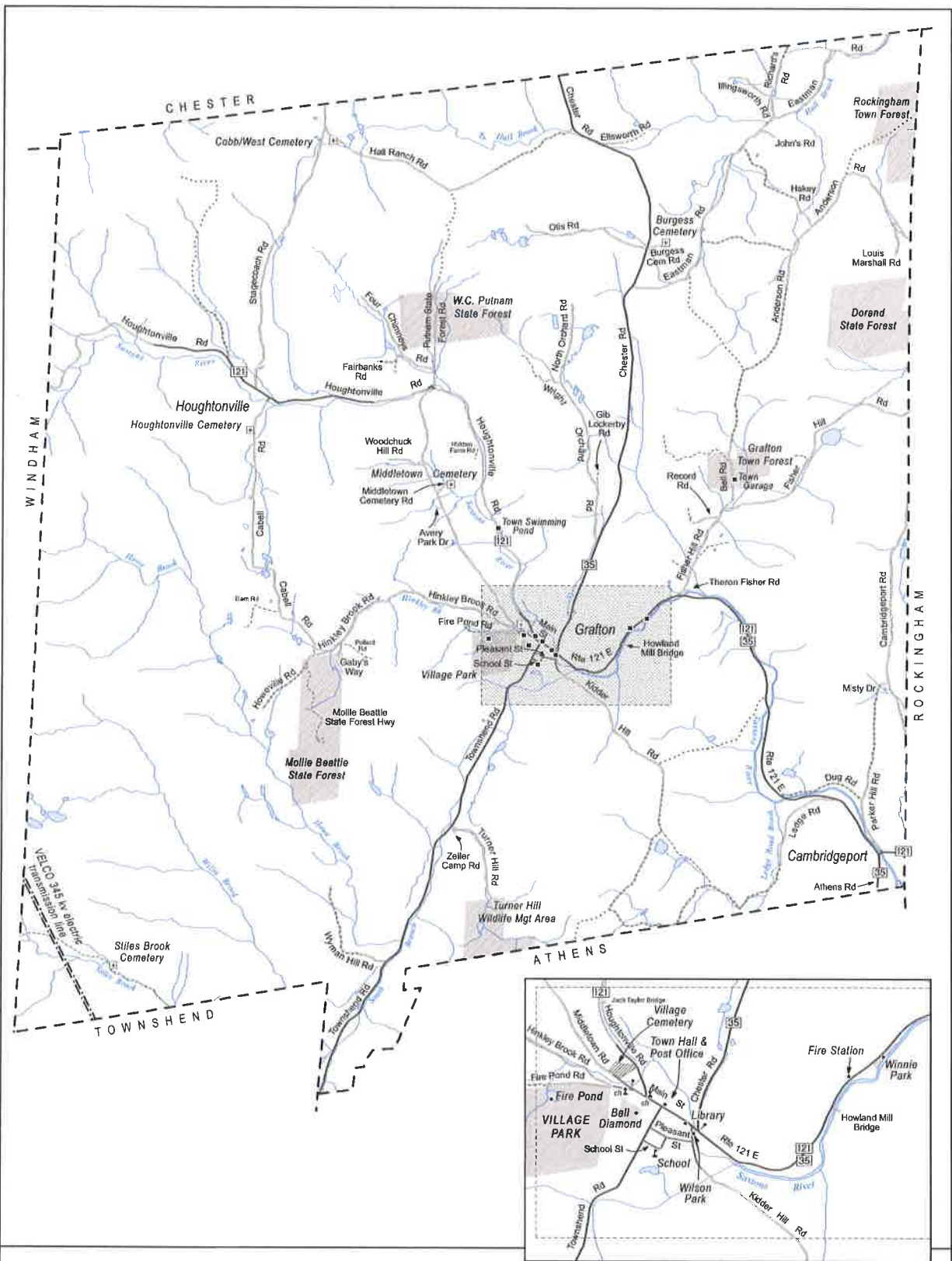
Data sources:

- Special Flood Hazard Area boundaries (i.e. "the 100-year floodplain") are from FEMA (Federal Emergency Management Agency) D-FIRM (Digital Flood Insurance Rate Map) data effective September 28, 2007.
- Statewide River Corridors are from VT ANR Rivers Program 2015 data (VGIS data layer RIVERCORRIDORS).

Official source of River Corridor data is myurl.com/floodresdyxilas. Where river corridors are not mapped (i.e. a stream with a drainage area of between 0.5 and 2 square miles), the corridor is measured 50 feet horizontally from the top of the stream bank.

1:42,000

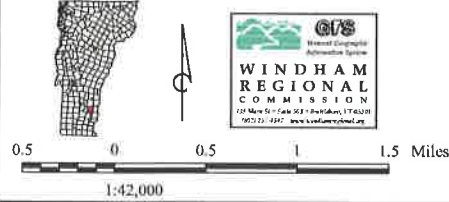
WINDHAM REGIONAL COMMISSION
 220 North St • Suite 101 • Grafton, VT 05034
 (802) 477-4242 • www.windhamregional.org



Community Facilities

Town of Grafton, Vt.

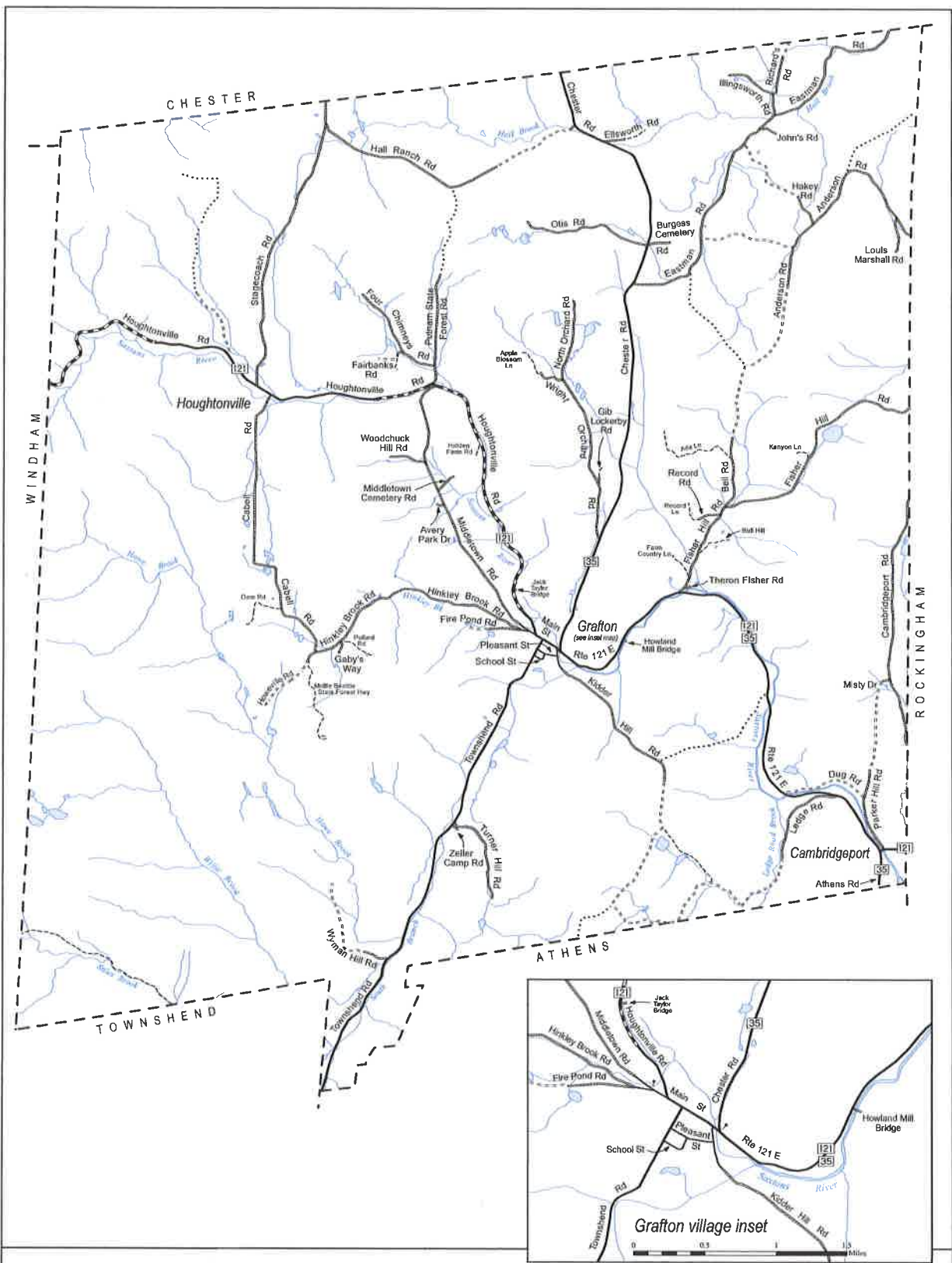
November 2018



- Cemetery (town-wide map)
- Cemetery (village inset map)
- Community facility (town-wide map)
- Community facility (village inset map)
- School
- Church
- Electric transmission line
- State forest, town forest, town park

Data sources:

- Electric transmission lines were digitized from 1:5000 orthophotos by Greenhorn & O'Mara Inc. under contract with OGIS.
- Cemetery locations were determined by WRC using 1:5000 orthophotos and 1:5000 digital parcel data.
- Community facilities were identified by the Grafton Planning Commission. Locations were determined by WRC using 1:5000 orthophotos and building points located by GPS for Vermont's Enhanced 9-1-1 project.
- Public land boundaries were determined using Grafton's 1:5000 digital parcel data.



Transportation System

Town of Grafton, Vt.

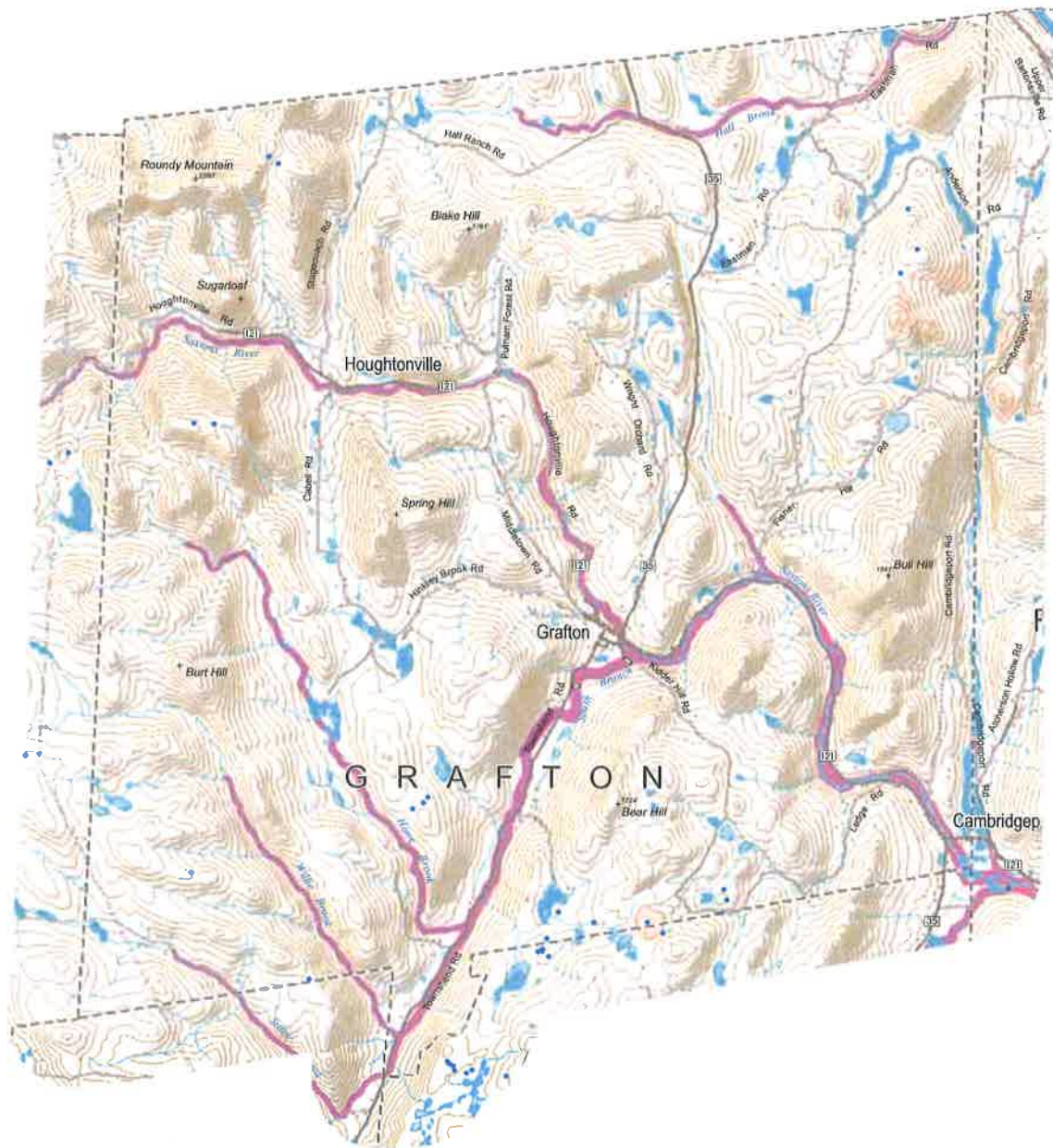
November 2018



- Class 2 town highway - paved
- Class 2 town highway - unpaved
- Class 3 town highway - paved
- Class 3 town highway - unpaved
- Class 4 Town Highway
- Legal Trail
- Private road/drive
- Town boundary
- Stream
- River or pond
- Symbol denotes change in road name

Sources:

- Roads data are from Vt. Agency of Transportation (VGS data layer RD), 2018, with minor edits by Windham Regional Commission.
- Surface waters are from the Vermont Hydrography Dataset (VGS data layer SWnummm). The dataset was generated at a scale of 1:50,000 and was developed using digital orthophotos, topographic maps, color infra-red aerial photography and other ancillary data practices.



Town of Grafton Known Constraints for Energy Generation *

- Vernal Pools
- Class 1 and 2 Wetlands, VSWI
- DEC River Corridors and/or FEMA Floodways
- National Wilderness Areas
- State-significant Natural Communities and Rare, Threatened, and Endangered species

Some features are shown slightly larger than their actual size to improve visibility on this small-scale map.

* - as defined by Vermont's Act 174



April 2017